

Courses On the Creek

By a Post N 72 W 26

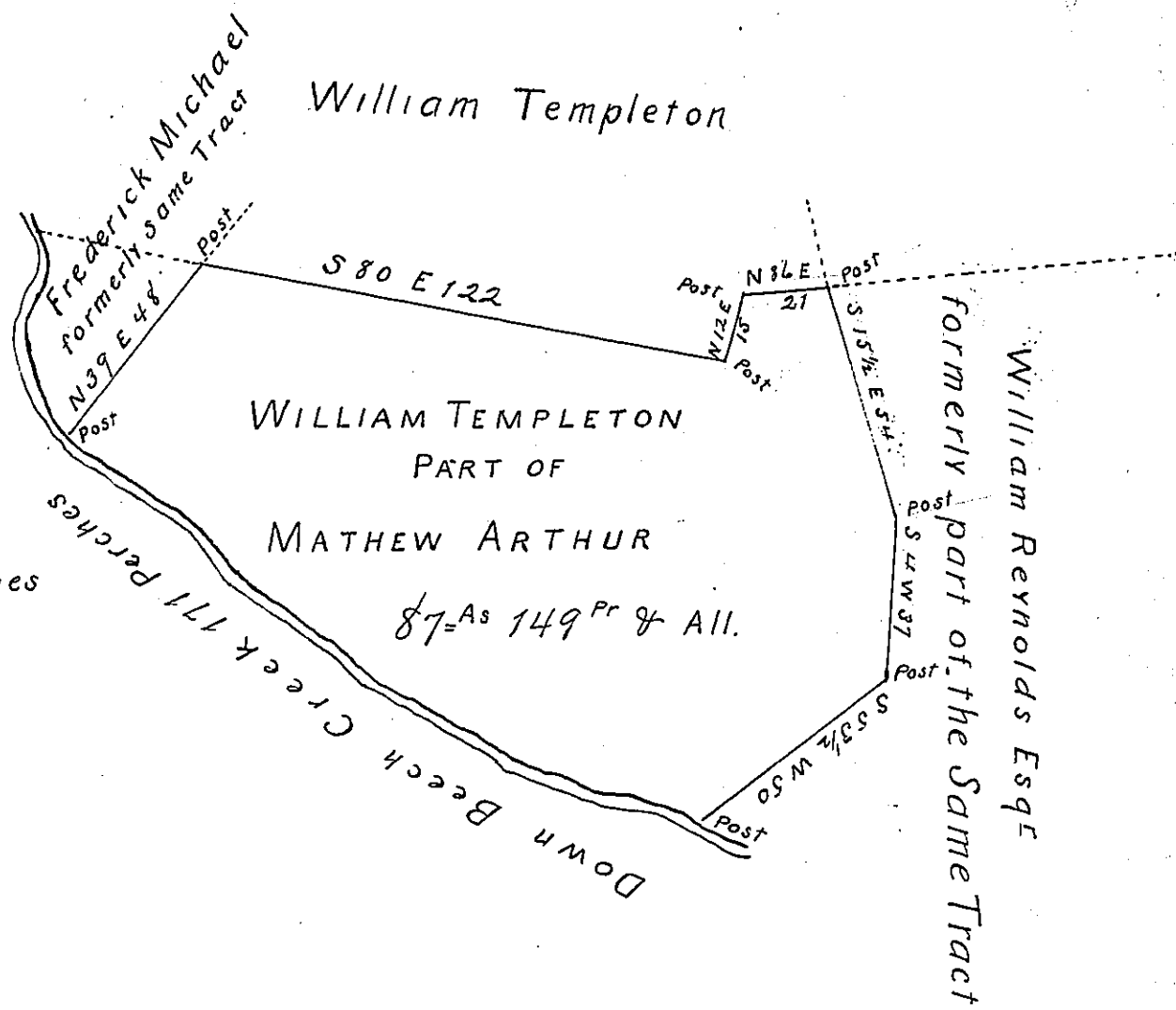
N 67 W 22

N 63 1/2 W 36

N 54 W 32

N 41 W 14

N 54 W 41
171 Perches



A Draught of a Tract of Land Situate in Hamilton Township Franklin County Containing Eighty seven acres and One hundred and forty nine perches and the usual Allowance of Six p. Cent for Roads &c. being part of a larger Tract of Two hundred acres and Allowance &c. which was Surveyed in pursuance of a Warrant granted Mathew Arthur Dated October 15th 1744 Resurveyed and laid off from the other parts of Said Tract for William Templeton May 17th 1813.

Thomas Poe D.S

To Andrew Porter Esqr
Surveyor General, of Penna

IN TESTIMONY that the above is a copy of the original remaining on file in the Department of Internal Affairs of Pennsylvania, made conformably to an Act of Assembly approved the 16th day of February, 1833, I have hereunto set my Hand and caused the Seal of said Department to be affixed at Harrisburg, this fourth day of August 1903.

Innocent P. Brown
Secretary of Internal Affairs.